

FORM F 108  
Revision: 04  
Page: 1/1

Product specification  
for inductive components

MAGNETEC GmbH  
Industriestrasse 7  
D-63505 Langenselbold

Client:	MAGNETEC	Magnetec P/N:	M-925	Magnetec A/N:	12705
Client's P/N:	/	PS Index:	01	PS Revision:	04
Subject:	EMC Wandler				

1. Mechanical Outline

Nominal equivalent round core:

16 x 10 x 6

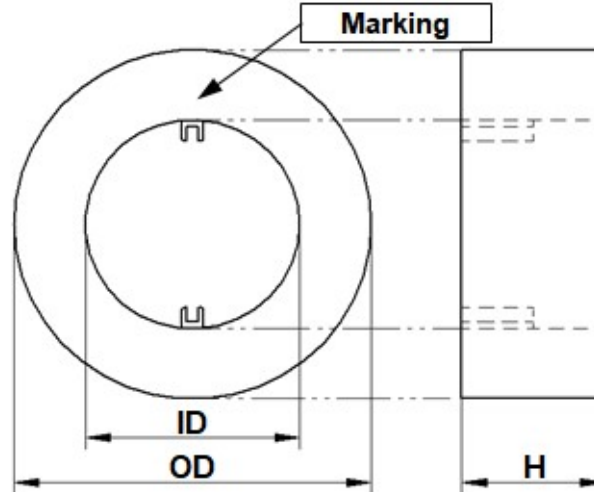
Finished product dimensions:

OD  $\leq$  18,0

ID  $\geq$  8,0

H  $\leq$  8,2

[dimensions] = mm



2. Core data (nominal values)

Core material:	NANOPERM®	$L_{Fe} = 4,0$ cm	$A_{Fe} = 0,12$ cm <sup>2</sup>
Permeability level:	ca. 30 000	@ frequency 10 kHz	@ H peak 3,5 mA/cm

3. Inspection values (at room temperature, unless otherwise stated)

Measured value	Measurement limits	Frequency	leff x N [mA x turn]
AL [ $\mu$ H]	9,5 - 19,0	10 kHz	10
AL [ $\mu$ H]	4,5 - NA	100 kHz	10

4. Core finishing

Type:	Cased
Marking:	MAGNETEC M-925-01 YM (YM = Year/Month), acc. to IEC 60062 6.1.1
Packaging:	110 pcs. per layer; 9 layers per carton box; PU = 990 pcs.

5. Comments

Visit [http://www.magnetec.de/fileadmin/pdf/pb\\_ds.pdf](http://www.magnetec.de/fileadmin/pdf/pb_ds.pdf) for further information.

Index / Revision	Alteration	Date
01 / 01	First issue	21.10.2014
02 / 02	Case change	01.09.2016
01 / 03	Case change back to brown	07.10.2016
01 / 04	Drawing correction	03.07.2017

Created:	Z. Palánki 03.07.2017	Approved (Techn):	F. Záborszky 05.07.2017	Approved (Quality):	G. Zsák 05.07.2017	Released:	T. Trupp 05.07.2017
----------	--------------------------	-------------------	----------------------------	---------------------	-----------------------	-----------	------------------------

Disclosing the specification to third parties or using its content without written permission from MAGNETEC is strictly forbidden and every offender is liable to pay the corresponding damages